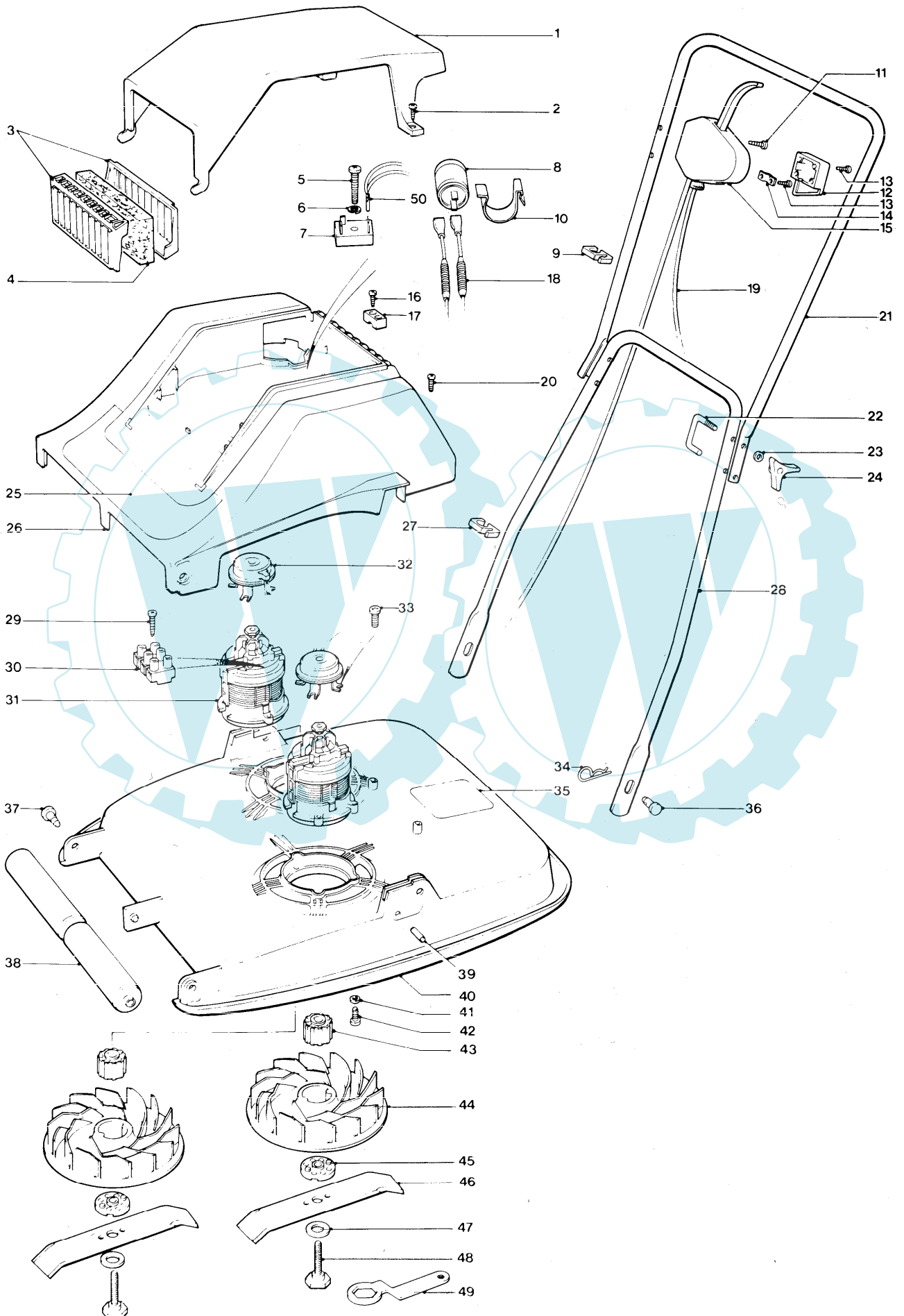


Flymo

E-52S 9635501



Ihr Ersatzteilspezialist im Internet



E-52S 9635501

KEY No.	PART No.	DESCRIPTION	QUANTITY	COMMENTS/ APPLICATION	KEY No.	PART No.	DESCRIPTION	QUANTITY	COMMENTS/ APPLICATION
1	5106104-00/2	COVER TOP	1		36	5140092-01/5	PIN LOCKING	2	ALT USE 5140092-00/7
2	5146824-00/7	SCREW	2	ALT USE 5147665-00/4	37	5147593-00/7	PIN	2	
3	5126338-00/2	CASE FILTER	2		38	5136017-01/8	ROLLER FRONT	2	
4	5136528-00/6	FILTER	1		39	5147594-00/5	PIN	2	
5	5147877-00/4	SCREW	1		40	5126413-00/3	HOOD 52 cm	1	
6	5140046-01/1	WASHER SPRING 5mm	1		41	5140266-00/7	WASHER	6	
7	322814-00/5	RECTIFIER	1		42	5141585-02/5	SCREW	6	
8	323183-00/4	SUPPRESSOR	1		43	5126358-00/0	IMPELLOR INSERT	2	
9	5140863-00/1	CABLE CLIP LARGE	1		44	5116745-00/0	IMPELLOR	2	
10	5147825-00/3	CLIP	1		45	5136668-01/8	BLADE SPACER	6	
11	5147788-00/3	SCREW	2		46	5126339-01/8	BLADE	2	
12	5136620-00/1	COVER SWITCHBOX	1		47	5140516-00/5	ANTI FRICTION WASHER (PTFE)	2	
13	5147809-00/7	SCREW	6		48	5136242-01/2	BLADE BOLT	2	
14	5147774-00/3	CABLE GRIP	1		49	5130127-00/3	SPANNER	1	
15	5126362-01/0	SWITCHBOX ASSY.	1	GB.	50	5147849-00/3	LEAD ASSY.	2	
	5126412-01/3	SWITCHBOX ASSY.	1	A.D.					
	5126412-02/1	SWITCHBOX ASSY.	1	F.B.NL.					
	5126412-03/9	SWITCHBOX ASSY.	1	I.					
	5126412-04/7	SWITCHBOX ASSY.	1	CH.					
	5126362-02/8	SWITCHBOX ASSY.	1	SF.					
	5126362-04/4	SWITCHBOX ASSY.	1	N.DK.					
	5126362-03/6	SWITCHBOX ASSY.	1	E/P. EI.O/S.					
16	5146824-00/7	SCREW	2	ALT USE 5147665-00/4					
17	5136527-00/8	CLAMP	1	ALT USE 5136692-00/0					
18	5147848-00/5	CHOKE ASSY.	2						
19	5136621-00/9	LEAD TERMINAL C/W PLUG	1	GB.					
	5147000-02/9	LEAD TERMINAL	1	A.N.DK.F.B.NL.I.					
20	5146824-00/7	SCREW	2	ALT USE 5147665-00/4					
21	5136566-00/6	HANDLE UPPER	1						
	5136573-06/9	HANDLE UPPER	1	D.					
22	5147542-00/4	J BOLT	2						
23	5140266-00/7	WASHER	2						
24	5140690-00/8	KNOB WING	2						
25	5126411-00/7	LABEL FLYMO E52 S	1						
26	5106103-00/4	COWLING	1						
27	5140863-00/1	CABLE CLIP LARGE	1						
28	5106110-00/9	HANDLE LOWER	1						
29	7295231-01/8	SCREW	2						
30	7627203-57/8	TERMINAL BLOCK	2						
31	5136641-00/7	MOTOR 240v C/W ADAPTOR	2						
	5136641-01/5	MOTOR 220v C/W ADAPTOR	2						
32	5126318-02/0	BRAKE	2	USE 5126318-82/2					
33	5147114-00/2	SCREW TAPTITE UNC 3/8" LNG	8						
34	5140423-00/4	PIN RETAINING	2						
35	5146467-00/5	LABEL WARNING	1	GB.O/S.E.P.EI.					
	5136507-00/0	LABEL WARNING	1	D.CH.A.					
	5136361-00/2	LABEL WARNING	1	SF.					
	5136364-00/6	LABEL WARNING	1	N.DK.					
	5146464-00/2	LABEL WARNING	1	F.B.NL.CH.					
	5146465-00/9	LABEL WARNING	1	SF.F.B.NL.					
	5146486-00/5	LABEL WARNING	1	I.					
	5146516-00/9	LABEL WARNING	1	E.P.EI.O/S					

PRODUCT VARIANT

9635501-01 GB.
9635501-03 A.
9635501-06 DK.N.

9635501-07 SF.
9635501-08 F.B.NL.

9635501-09 D.
9635501-11 I.

9635501-16 O/S.E.P.EI.
9635501-22 CH.

When no application details are shown the part applies to all countries.